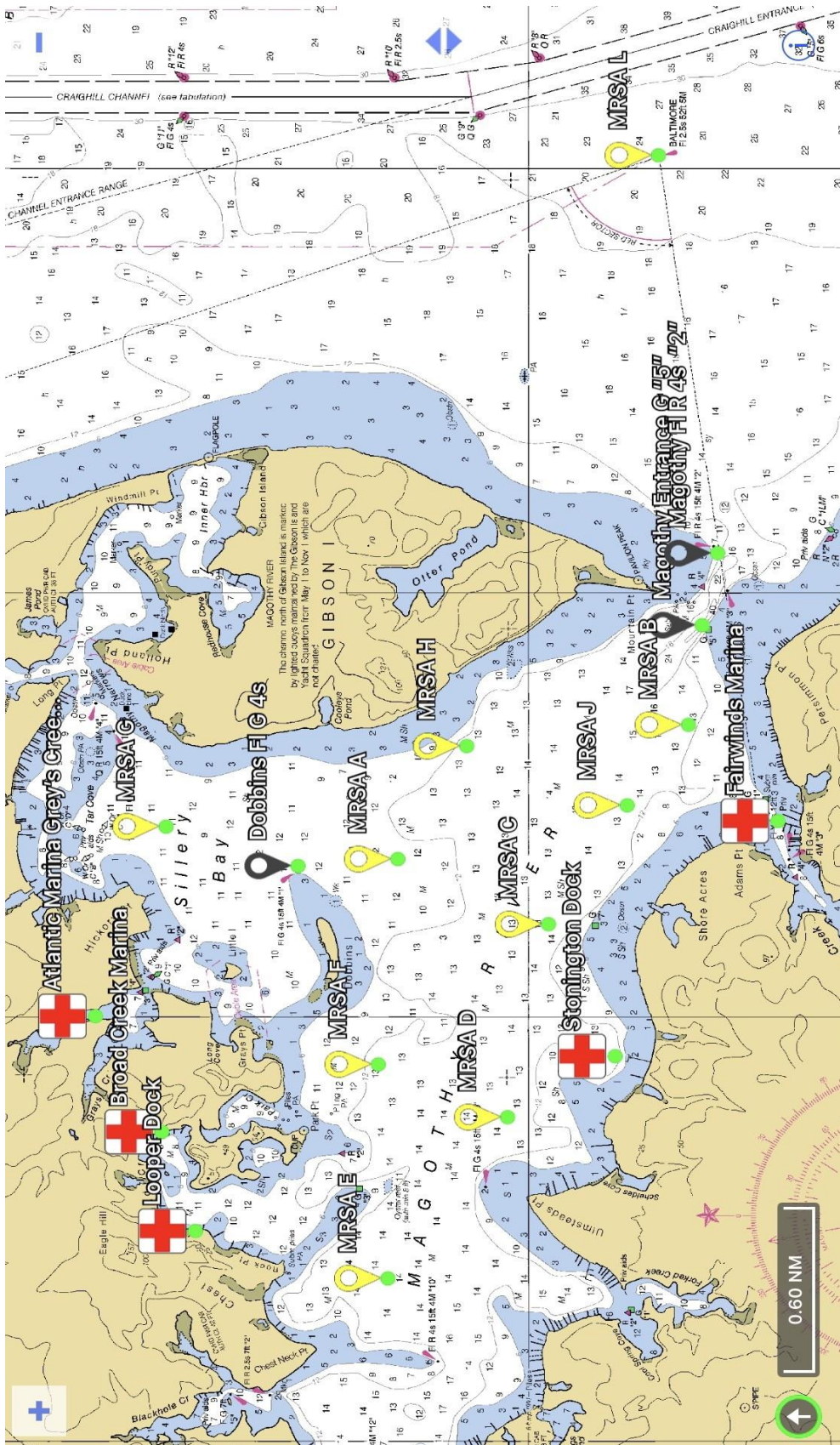


Magothy River Chart Rev. 3



Race Mark Locations and Bearing / Ranges between Race Marks

Race Mark Positions		
Mark	Latitude	Longitude
A	39-04.466	76-27.253
B	39-03.450	76-26.620
C	39-03.930	76-27.560
D	39-04.070	76-28.470
E	39-04.480	76-29.230
F	39-04.513	76-28.221
G	39-05.240	76-27.100
H	39-04.210	76-26.720
J	39-03.660	76-27.000
L (Baltimore Light)	39-03.553	76-23.935

Magnetic Bearings Between Race Marks									
	A	B	C	D	E	F	G	H	J
A		166	215	259	282	285	20	133	178
B	346		315	305	308	322	360	6	317
C	35	135		293	304	330	27	78	133
D	79	125	113		316	35	54	96	121
E	102	128	124	136		99	77	109	127
F	105	142	150	215	279		62	116	143
G	200	180	207	234	257	242		176	189
H	313	186	258	276	289	296	356		213
J	358	137	313	301	307	323	9	33	

Bearing from Magothy Channel Marker FL R 4s "2" to Mark L (Baltimore Light) is 94
 Bearing from Mark L (Baltimore Light) to Magothy Channel Marker FL R 4s "2" is 274

Distances Between Race Marks, Nautical Miles									
	A	B	C	D	E	F	G	H	J
A		1.13	0.59	1.03	1.54	0.76	0.77	0.49	0.83
B	1.13		0.89	1.57	2.28	1.64	1.83	0.77	0.37
C	0.59	0.89		0.71	1.41	0.77	1.35	0.72	0.51
D	1.03	1.57	0.71		0.73	0.49	1.58	1.37	1.21
E	1.54	2.28	1.41	0.73		0.79	1.82	1.97	1.92
F	0.76	1.64	0.77	0.49	0.79		1.4	1.13	1.27
G	0.77	1.83	1.35	1.58	1.82	1.40		1.06	1.57
H	0.49	0.77	0.72	1.37	1.97	1.20	1.06		0.59
J	0.83	0.37	0.51	1.21	1.92	1.27	1.57	0.59	

Distance from Magothy Channel Mark FL R 4s "2" to Mark L (Baltimore Light) is 2.13 nm