

# 2024 MRSA Spring Fling

Sailing Instructions

Saturday, April 27, 2024

**OA: Magothy River Sailing Association, Inc.**



## 1 RULES

- 1.1 The regatta will be governed by the rules as defined in The Racing Rules of Sailing (RRS)
- 1.2 All boats shall comply with the US Sailing Safety Equipment Requirements (SER) Nearshore Category Revision 2023.0.
- 1.3 Rules of the PHRF of the Chesapeake, Inc. will apply to all monohulled sailboats rated by PHRF. Boats racing in the PHRF Non-Spinnaker class shall hoist only one headsail at a time, except during sail changes.
- 1.4 Rules of the Chesapeake Multihull Association will apply to boats rated by CMA.
- 1.5 Boats in CRCA Class(es) using ORR-Ez ratings shall comply with the ORR-Ez Rulebook and CRCA Class Rules. Assignment to a specific class will be based on participation and is not grounds for redress.

## 2 CHANGES TO SAILING INSTRUCTIONS

Any change to the sailing instructions will be posted before 1700 on the day before the race

## 3 COMMUNICATIONS WITH COMPETITORS

- 3.1 Notices to competitors will be published on [www.magothysailing.org](http://www.magothysailing.org) and may also be communicated to skippers via e-mail.
- 3.2 No race committee boat will be on course during the race but pre-race communications up to 0800 the day of the race will be handled by the Rear Commodore, Chris Lindsay, at 410-428-4494. After 0800 please contact John Nicholson, at 410-241-6927.

## 4 SCHEDULE OF RACES

One race is scheduled to be sailed on April 27, 2024.

## 5 THE COURSES

- 5.1 The race committee intends to pick one of three possible courses that is commensurate with the predicted conditions, see Attachment "A"
- 5.2 The race committee will post the selected course no later than 1700 on Friday, April 26<sup>th</sup> at [www.magothysailing.org/spring-fling](http://www.magothysailing.org/spring-fling) and will be emailed to competitors.

## 6 THE START

- 6.1 Each boat will be assigned: (1) a starting time window in which they must start and (2) a starting mark (based on the boat's homeport). The starting line for each course is defined in Attachment "A".
- 6.2 Each boat shall take their starting time (GPS Time) when they cross the pre-defined starting line.

## **7 THE FINISH**

- 7.1 The finishing mark will be the same as your starting mark and the finishing line for each course is defined in Attachment "A".
- 7.2 Each boat shall take their finishing time (GPS Time) when they cross the pre-defined finishing time along with noting any boats that finished directly before or after them.
- 7.3 Boats are requested to submit their starting and finishing times as soon as possible to [scorer@magothysailing.org](mailto:scorer@magothysailing.org) after finishing to allow for results to be updated as boats finish.

## **8 PENALTY SYSTEM**

- 8.1 For any RRS Part 2 infractions, RRS Rule 44.1 through 44.2 shall apply except as modified below:
  - 8.1.1 Boats may take a one turn penalty when:
    - 8.1.1.1 There is no contact between boats, AND
    - 8.1.1.2 The incident does not occur within three boat-lengths of a starting line, finish line, or rounding mark
- 8.2 RRS 44.3 shall not apply

## **9 TIME LIMITS**

The time limit is 5 hours from your starting time.

## **10 PROTESTS (This is a fun race, but just in case...)**

- 10.1 Promptly following the completion of the race, a boat that intends to file a protest shall notify the Protest Committee Chair via email [protests@magothysailing.org](mailto:protests@magothysailing.org) within 90 minutes following the race.
- 10.2 A written protest shall be emailed to the Protest Committee Chair.  
Email: [protests@magothysailing.org](mailto:protests@magothysailing.org)
- 10.3 The protest shall be transmitted no later than 2100 hours on the day following the race.
- 10.4 Protests shall conform to RRS Part 5 except that pre-hearing mediation is possible, in which case the involved parties will be contacted.
- 10.5 Protests will be heard at the place and time specified by the Rear Commodore or Protest Committee Chair.

## **11 SCORING**

- 11.1 Time on Time scoring will be used for PHRF, CRCA, and Multihulls.
- 11.2 PHRF Scoring will use random course ratings
- 11.3 ORR-EZ ratings, course type and wind speed will be chosen before the race but may be modified based on actual conditions. The CRCA race liaison has the ultimate authority on the selected ORR-EZ ratings, course type and wind speed.

## **12 SAFETY**

- 12.1 There will not be a Race Committee Boat on station. Any safety incidents requiring assistance should contact emergency response agencies via Channel 16 & 911.

- 12.2 A boat shall not exercise right of way, cross in proximity to, or interfere with reasonable transit of the race area by commercial ships, tugs, or barges. Boats must take evasive action well in advance of a potentially dangerous situation. The US Coast Guard, ship captains, and bay pilots will be encouraged to report any incident they observe.
- 12.3 Gale Warning - If at 2000 on Friday - April 26, 2024, a gale warning is in effect for the scheduled day and time of the race, the race will be abandoned.
- 12.4 Competitors are requested to monitor VHF Channel 72 during the race for any communications allowable under RRS Rule 41 OUTSIDE HELP.

### **13 AWARDS**

- 13.1 Awards for first place will be awarded with at least three (3) boats entered for a series. Second place will be awarded with at least five (5) boats entered; third place with at least seven (7); fourth place with at least eleven (11) boats entered.
- 13.2 Additional awards may be given at the discretion of the organizing authority

### **14 DISCLAIMER OF LIABILITY**

Competitors participate in the regatta entirely at their own risk. See RRS Rule 4, Decision to Race. The organizing authority will not accept any liability for material damage or personal injury, or death sustained in conjunction with or prior to, during, or after the regatta.

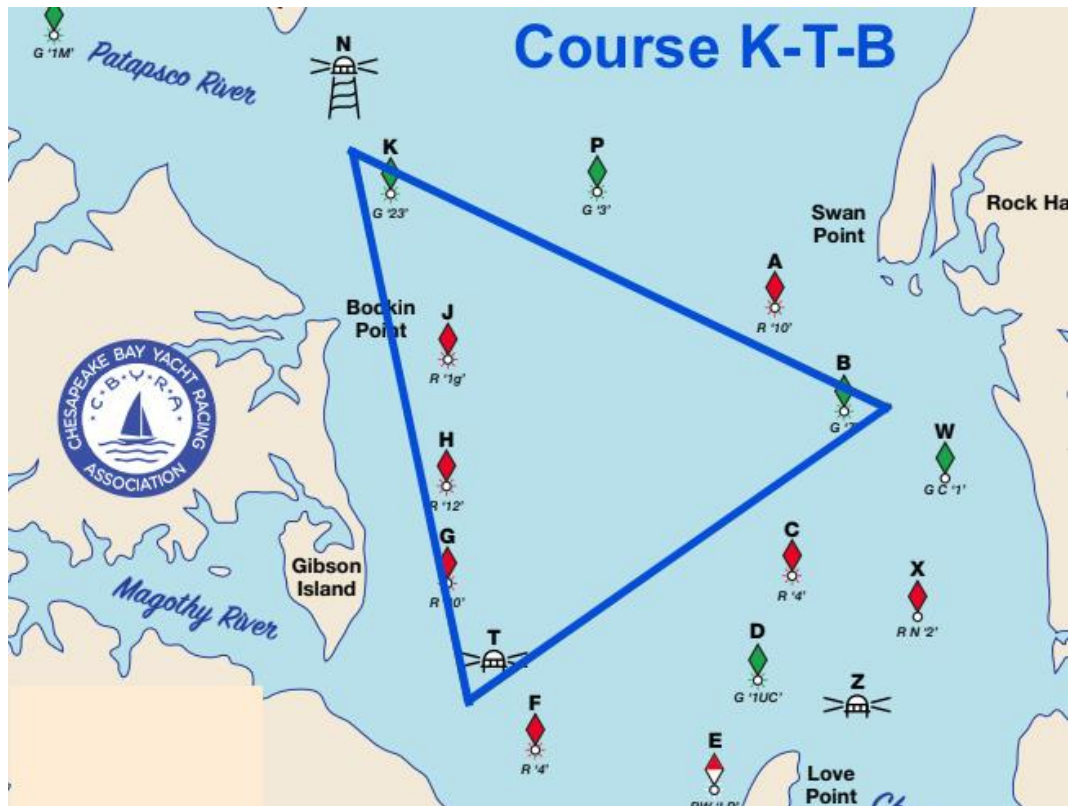
Attachment "A"

**Course KTB**

Distance – 17.2 NM

Skippers may sail the course in either a clockwise or counterclockwise direction

Clockwise Course	Counterclockwise Course
Start at <b>K</b> , leave <b>B</b> and <b>T</b> to Starboard, Finish at <b>K</b>	Start at <b>K</b> , leave <b>T</b> and <b>B</b> to Port, Finish at <b>K</b>
Starting Line – extends 150' Northeast of Mark <b>K</b>	Starting Line – extends 150' due West of Mark <b>K</b>
Finishing Line – extends 150' due West of Mark <b>K</b>	Finishing Line – extends 150' Northeast of Mark <b>K</b>
Start at <b>T</b> , leave <b>K</b> and <b>B</b> to Starboard, Finish at <b>T</b>	Start at <b>T</b> , leave <b>B</b> and <b>K</b> to Port, Finish at <b>T</b>
Starting Line – extends 150' due West of Mark <b>T</b>	Starting Line – extends 150' Southeast of Mark <b>T</b>
Finishing Line – extends 150' Southeast of Mark <b>T</b>	Finishing Line – extends 150' due West of Mark <b>T</b>
Start at <b>B</b> , leave <b>T</b> and <b>K</b> to Starboard, Finish at <b>B</b>	Start at <b>B</b> , leave <b>K</b> and <b>T</b> to Port, Finish at <b>B</b>
Starting Line – extends 150' Southeast of Mark <b>B</b>	Starting Line – extends 150' Northeast of Mark <b>B</b>
Finishing Line – extends 150' Northeast of Mark <b>B</b>	Finishing Line – extends 150' Southeast of Mark <b>B</b>

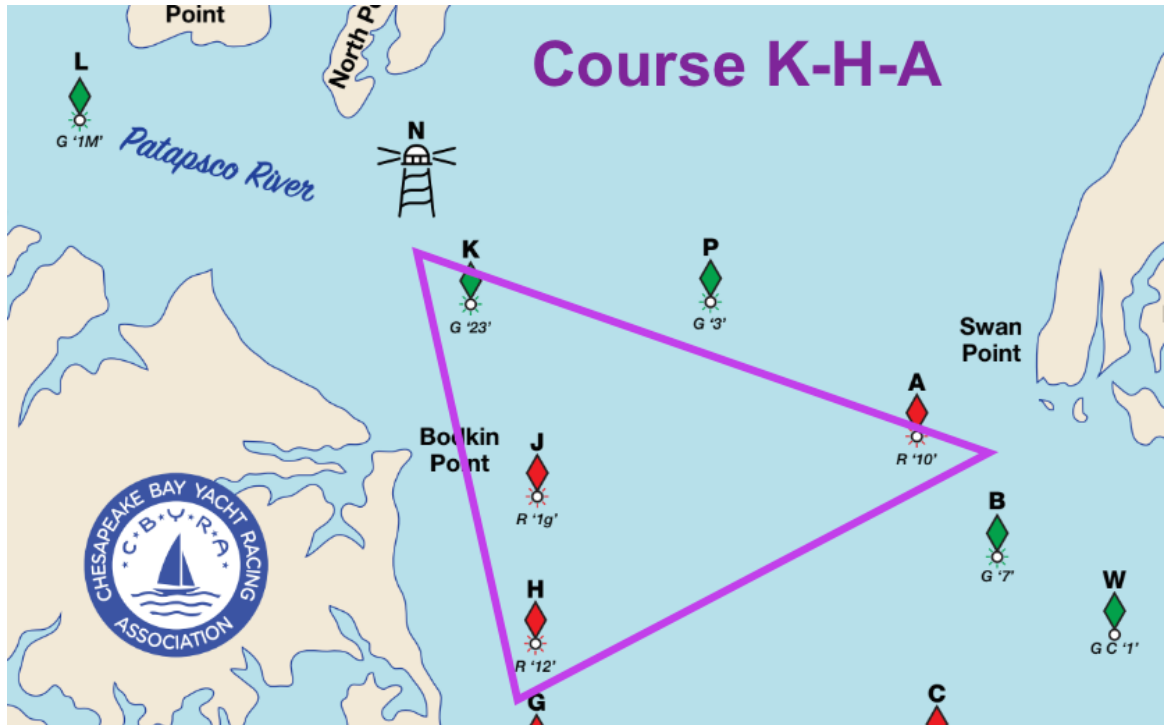


**Course KHA**

Distance – 13.5 NM

Skippers may sail the course in either a clockwise or counterclockwise direction

<b>Clockwise Course</b>	<b>Counterclockwise Course</b>
Start at <b>K</b> , leave <b>A</b> and <b>H</b> to Starboard, Finish at <b>K</b>	Start at <b>K</b> , leave <b>H</b> and <b>A</b> to Port, Finish at <b>K</b>
Starting Line – extends 150’ due North of Mark <b>K</b>	Starting Line – extends 150’ due West of Mark <b>K</b>
Finishing Line – extends 150’ due West of Mark <b>K</b>	Finishing Line – extends 150’ due North of Mark <b>K</b>
Start at <b>H</b> , leave <b>K</b> and <b>A</b> to Starboard, Finish at <b>H</b>	Start at <b>H</b> , leave <b>A</b> and <b>K</b> to Port, Finish at <b>H</b>
Starting Line – extends 150’ due West of Mark <b>H</b>	Starting Line – extends 150’ Southeast of Mark <b>H</b>
Finishing Line – extends 150’ Southeast of Mark <b>H</b>	Finishing Line – extends 150’ due West of Mark <b>H</b>
Start at <b>A</b> , leave <b>H</b> and <b>K</b> to Starboard, Finish at <b>A</b>	Start at <b>A</b> , leave <b>K</b> and <b>H</b> to Port, Finish at <b>A</b>
Starting Line – extends 150’ Southeast of Mark <b>A</b>	Starting Line – extends 150’ Northeast of Mark <b>A</b>
Finishing Line – extends 150’ Northeast of Mark <b>A</b>	Finishing Line – extends 150’ Southeast of Mark <b>A</b>

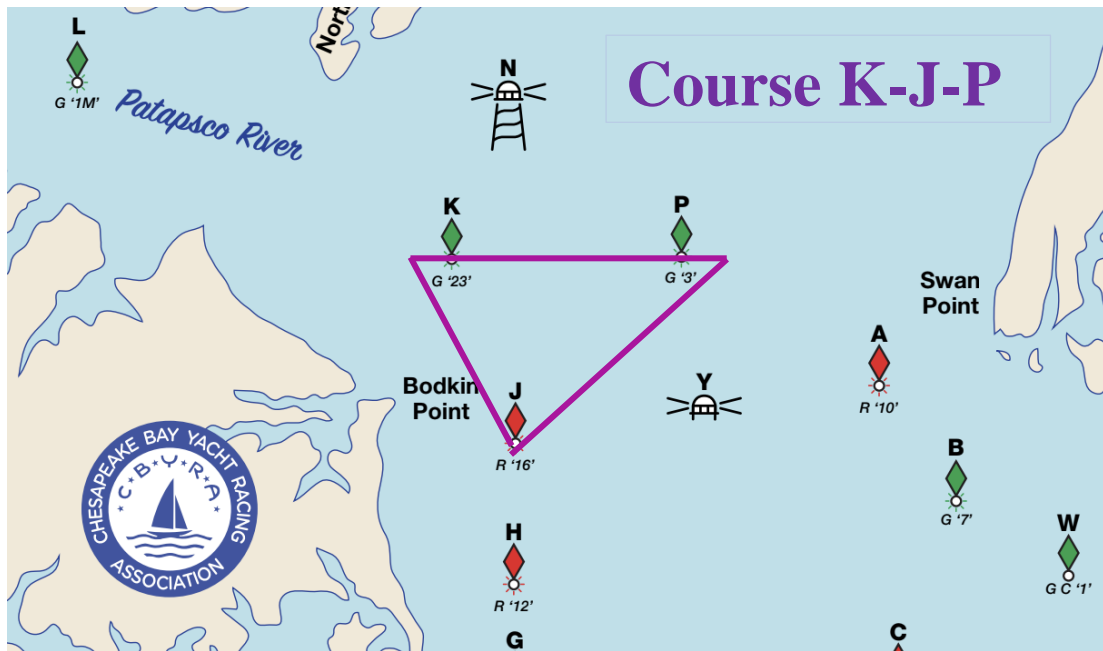


### Course KJP

Distance – 8.6 NM

Skippers may sail the course in either a clockwise or counterclockwise direction

<b>Clockwise Course</b>	<b>Counterclockwise Course</b>
Start at <b>K</b> , leave <b>P</b> and <b>J</b> to Starboard, Finish at <b>K</b>	Start at <b>K</b> , leave <b>J</b> and <b>P</b> to Port, Finish at <b>K</b>
Starting Line – extends 150' due North of Mark <b>K</b>	Starting Line – extends 150' due West of Mark <b>K</b>
Finishing Line – extends 150' due West of Mark <b>K</b>	Finishing Line – extends 150' North of Mark <b>K</b>
Start at <b>J</b> , leave <b>K</b> and <b>P</b> to Starboard, Finish at <b>J</b>	Start at <b>J</b> , leave <b>P</b> and <b>K</b> to Port, Finish at <b>J</b>
Starting Line – extends 150' due West of Mark <b>J</b>	Starting Line – extends 150' Southeast of Mark <b>J</b>
Finishing Line – extends 150' Southeast of Mark <b>J</b>	Finishing Line – extends 150' due West of Mark <b>J</b>
Start at <b>P</b> , leave <b>J</b> and <b>K</b> to Starboard, Finish at <b>P</b>	Start at <b>P</b> , leave <b>K</b> and <b>J</b> to Port, Finish at <b>P</b>
Starting Line – extends 150' Southeast of Mark <b>P</b>	Starting Line – extends 150' due North of Mark <b>P</b>
Finishing Line – extends 150' due North of Mark <b>P</b>	Finishing Line – extends 150' Southeast of Mark <b>P</b>



## Region 2 – 2022 Standard Racing Marks

Mark	Govt. ID	Characteristics	Location	Lat 39 N	Lon 76 W
A	R "10"	Q R	Upper Chesapeake Channel - Lighted Buoy 10	8.38	19.36
B	G "7"	FI G 6s	Upper Chesapeake Channel - Lighted Buoy 7	6.59	18.29
C	R "4"	Q R	Upper Chesapeake Channel - Lighted Buoy 4	5.65	17.89
D	G "1UC"	FI G 4s	Upper Chesapeake Channel - Lighted Buoy 1UC	4.81	18.86
E	RW "LP"	Mo (A) W	Upper Chesapeake Channel - Lighted Buoy LP	2.58	20.76
F	R "4"	FI R 4s	Craighill Channel - Lighted Buoy 4	2.26	22.83
G	R "10"	FI R 2.5s	Craighill Channel - Lighted Buoy 10	4.46	23.57
H	R "12"	FI R 4s	Craighill Channel - Lighted Buoy 12	5.18	23.57
J	R "16"	FI R 6s	Craighill Channel - Lighted Buoy 16	6.99	23.57
K	G "23"	FI G 4s	Craighill Channel - Lighted Buoy 23	9.33	25.12
L	G "1M"	Q G	Fort McHenry Channel - Lighted Buoy 1M	12.05	30.78
M	Fixed Lt	FI W 2.5s, 27ft	Pooles Island Bar Light	15.71	16.68
N	Fixed Lt	FI W 2.5s, 22ft	Craighill Channel - RANGE FRONT LIGHT	11.32	23.66
P	G "3"	FI G 4s	Bewerton Channel - Lighted Buoy 3	9.14	21.14
R	Fixed Lt	FI 6s 51ft 9M	Sandy Point Light	0.94	23.09
T	Fixed Lt	FI 2.5s 52ft	Craighill Channel - BALTIMORE LIGHT	3.55	23.94
U	RC Choice	Inflatable Drop	May be set by RC as Starting Line		
V	RC Choice	Inflatable Drop	May be set by RC as 1 mark on course		
W	GC "1"		Swan Creek - Entrance Buoy 1	5.57	15.25
X	RN "2"		Chester River - Entrance Buoy 2	4.03	16.34
Y	Fixed Lt	Iso W 6s, 89ft	Brewerton Channel - Tolchester Channel Range Rear Light	7.41	20.94
Z	Fixed Lt	FI w 6s, 31FT	Upper Chesapeake Channel - Love Point Light	3.42	17.02
PP	GC "11"	FI R 4s	Fort McHenry Channel - Buoy 11	14.39	33.26